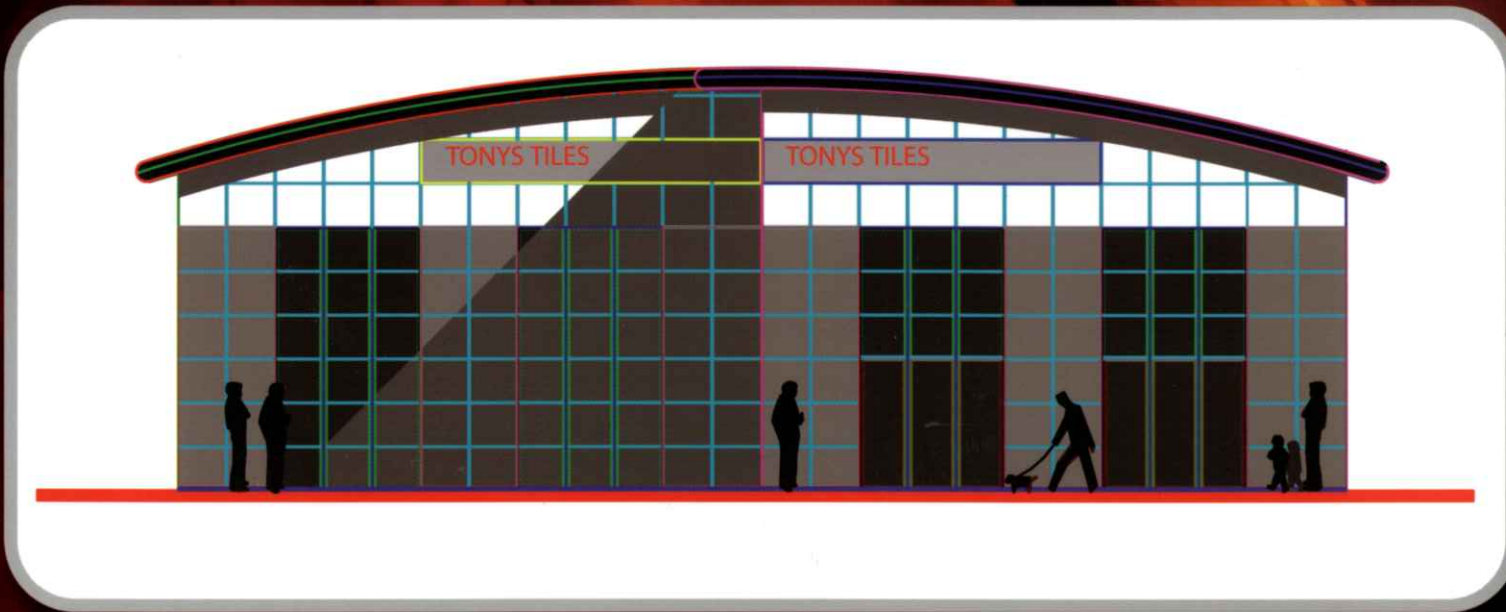


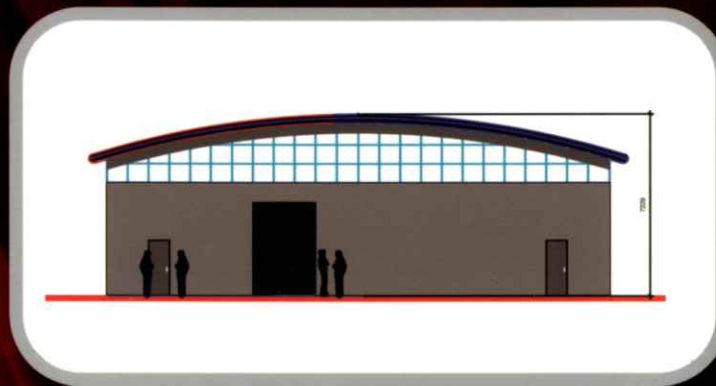
Bridgend Tremains Road



New
3,850ft²
Roadside
Retail Unit

9 Car
Parking
Spaces

Delivery Bay

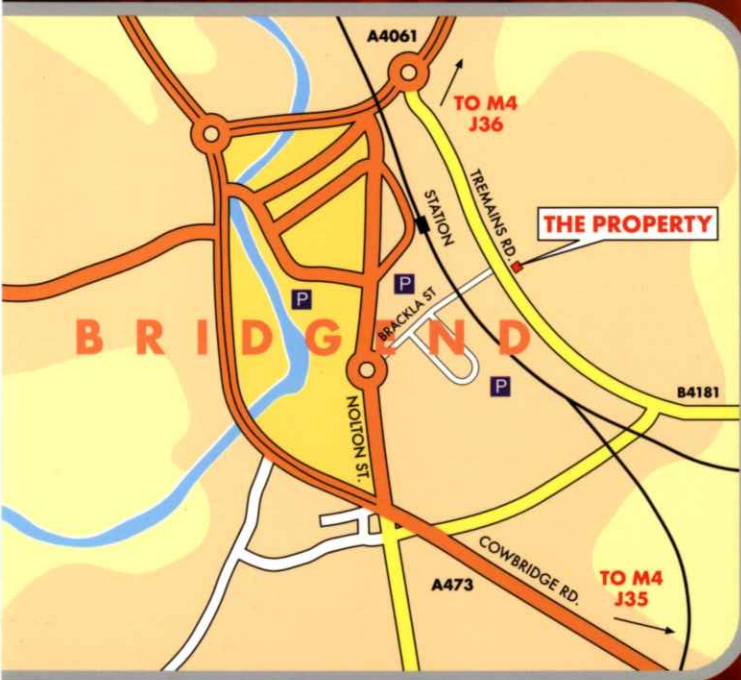


Bridgend Tremains Road

Location

The property is located approximately half a mile to the east of the town centre of Bridgend. The property is close to the T junction with Brackla Street and Tremains Road.

Tremains Road consists of a number of commercial uses including retail and leisure, Castle Bingo, Sinclair VW, Carpet Clearance Superstore, Brandon Tool Hire, Honda etc.



Description

The property will be a new single storey free standing retail unit with the benefit of 9 car spaces and a delivery bay to the rear.

Accommodation

Frontage -	64 ft.	19.45m
Maximum Depth	73 ft.	22.20m
Total Area	3850 ft ²	358 m ²

Lease

The Unit is available on a new standard institutional lease.

Rates

To be assessed.

Rent

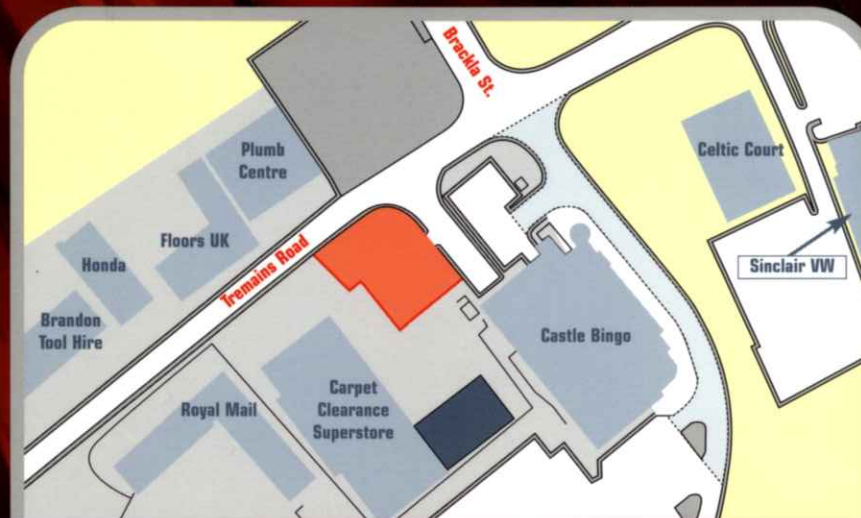
On Application.

Viewing

Contact: Terry Melia
Terry@ejhales.co.uk
Matthew@ejhales.co.uk



Plans are for identification purposes only.
Not drawn to scale.



Misrepresentations Act

These Particulars of Sale do not form part of any offer or contract. Whilst the particulars are given in good faith, they are made without responsibility on the part of E.J. Hales or the Vendor/Lessor and the intended Purchaser/Lessee should satisfy himself as to their accuracy by his own inspection and enquires. Neither E.J. Hales nor anyone in their employ not the Vendor/Lessor imply, make or give any representation or warranty whatever in relation to this property.